

Summer 2024

**IFB** *Idaho Farm Bureau*<sup>®</sup>  
**MEMBER BENEFITS**



List of Local Benefits  
pg 31

Being a member of  
Idaho Farm Bureau opens the  
door to AMAZING SAVINGS.

Visit the [idahofbstore.com](http://idahofbstore.com)  
and start saving today

## MISSION STATEMENT

# "Idaho Farm Bureau empowers Idaho agriculture."

### WHO IS IDAHO FARM BUREAU FEDERATION

The Idaho Farm Bureau Federation is a grassroots organization with **81,752** member families that represents and supports farmers and ranchers in Idaho at the county, state, and national levels.

For over 80 years, the Idaho Farm Bureau has brought farmers and ranchers together to discuss agricultural issues, create policy, and protect the rights of its members.

With a presence in every county in Idaho, Farm Bureau members educate and advocate for agriculture by building relationships with elected officials, consumers, youth, and other agriculturalists.

Idaho Farm Bureau is committed to strengthening relationships with other agricultural organizations and elected officials to ensure that agriculture will continue to be viable for future generations.

### RELATIONSHIP WITH FARM BUREAU INSURANCE COMPANY

Idaho Farm Bureau is the largest general farm organization in the State of Idaho. The Federation initially found it difficult to find insurance for Idaho farms in the 1940's, so they created Idaho Farm Bureau Insurance Company of Idaho, which serves Idahoans inside and outside of agriculture. Individuals must be members of the Idaho Farm Bureau Federation in order to take advantage of all benefits, including personal lines of insurance.

**BECOME A MEMBER**  
@ [idahofbstore.com](http://idahofbstore.com)

# BENEFITS AT A GLANCE

## ABOUT US-2

"Idaho Farm Bureau empowers Idaho agriculture."

## AGRICULTURE EQUIPMENT & SERVICES-4

- John Deere
- Case IH
- Agri-Service
- Caterpillar
- Of the West
- FEWA
- Roe Paint
- No Fly Zone
- Grasshopper
- Farm Advantage by StoneX

## AUTO SALES & MAINTENANCE-8

- Ford
- Commercial Tire
- Jiffylube
- 93-Mini Mart
- Nampa Auto Parts-Salmon
- Salmon Qwik Lube
- Orr's Point S Tire & Auto-Salmon
- Valley Equipment & Irrigation-Arco
- Firehose Car Wash
- Preston CarQuest Auto Parts
- Ron Keller Tire, Inc
- Glänzen Auto Detail
- St. Maries Saw & Cycle
- Silverlake Automotive
- Mile High Power Sports

## DINING -11

- Junkyard Bistro
- Rise & Shine Espresso
- L7 Bar & Grill
- Bru House Galilei
- Jim Dandy Brewing
- Smokin' Buds
- Smitty's Pancake & Steak House
- Morey's Steak House

## ENTERTAINMENT-12

- Movie Theaters
  - AMC/Regal
  - CinemaWest
  - Centre Twin Cinemas
  - Paramount Theater
  - Blackfoot Movie Mill
  - Century Cinema 5

## ENTERTAINMENT CONT.-13

- Theme Parks
  - Lagoon
  - Tickets at Work
  - Wahooz/Pinz
  - Roaring Springs
  - San Diego Zoo
  - Yellowstone Bear World
  - Great Wolf Lodge
  - Silver Mountain Resort
- Local Entertainment
  - Pins & Tips
  - Geronimo's
  - Idaho Potato Museum
  - Heber Hatchets
  - Sled Shed
  - Bearded Axe
  - Gemstone Climbing
  - Bigfoot Firearms
  - Desert Canyon Golf Course
  - SimShot

## HEALTH & BEAUTY-17

- Konnect MD
- Great Hearing Benefits
- The Canadian Pharmacy
- dbp Dental Benefit
- EVACU
- LifeFlight Network
- LifeStation
- Retail Pharmacy Card
- Salmon River Chiropractic
- Total Image Salon
- Root Cause Integrative Medicine
- Summit Eyecare
- Dermachic Laser & Skincare Center
- Peak Health & Wellness Center
- Pinnacle Physical Therapy

## HOME & OFFICE-20

- ODP Business Solutions
- Flagpole Farm
- Valley Wide Cooperative
- Rainy Day Foods
- Suburban Propane
- AmeriGas
- LegalShield/IDShield
- Carpet One Floor & Home
- Sherwin Williams
- Kelly-Moore Paints
- SwardYard

## HOME & OFFICE CONT-22

- The Recorder Herald
- River City Red-E-Mix
- Snowcap Storage
- HB Storage
- ETS Telco
- Trust Self Storage

## FINANCE & INSURANCE-23

- Farm Bureau Insurance of Idaho
- Idaho Farm Bureau Financial Services
- Aflac
- Farm Bureau Bank
- Farm Bureau Scholarship Program
- Farm Bureau Reward Program

## RETAIL SHOPPING-25

- Key Apparel
- Grainger
- Dungarees
- CBI Bikes
- Serpent Skin Camo
- Salmon Real Deals
- Matt Leitholt Photography + Film

## TRAVEL-27

- Hotels
  - Choice Hotels
  - Wyndham
  - Motel 6 + studio
  - Syringa Lodge
  - The Victor
  - Cub River Guest Ranch
  - Scenic 6 RV Park
  - Best Western PLUS-Burley
- Rental Cars
  - Budget
  - Avis
  - Enterprise
  - Hertz
  - Budget Truck Rental
  - Salt Lake Express

\*All programs and benefits are subject to change without notification.



# AGRICULTURE EQUIPMENT & SERVICES



Upgrade to  
**John Deere  
Rewards  
Platinum 1  
Status**

Idaho Farm Bureau members receive an upgraded John Deere Rewards membership (Platinum 1), which unlocks extra discounts on equipment, parts and merchandise.

- **COMMERCIAL MOWING: \$200 TO \$1,700 OFF**
- **RESIDENTIAL MOWING: \$50 TO \$150 OFF**
- **UTILITY VEHICLES: \$100 TO \$300 OFF**
- **TRACTORS: \$150 TO \$300 OFF**
- **COMPACT CONSTRUCTION: \$550 TO \$1,400 OFF**

**Details and Restrictions:**

- Must be a valid member of Farm Bureau for 30 days
- A valid member email address is required for eligibility.

**Don't wait.**

Visit [JohnDeere.com/FarmBureau](https://www.johndeere.com/farmbureau)  
today to register!



**SAVE  
\$200-\$500  
ON FARMALL®,  
MAXXUM®,  
VESTRUM® & MORE!**

Idaho Farm Bureau Members  
save \$200-\$500 on eligible purchases.

- \$500 per unit on the purchase or lease of Case IH Maxxum® and Vestrum® tractors; self-propelled windrowers and large square balers.
- \$200 per unit incentive is available for Case IH Farmall® A/C/U Series Utility tractors, and 100A/N/V Series tractors; Farmall® A and C Series compact tractors; Other hay tools, including round balers, small square balers, disc mower conditioners and sicklebar mower conditioners.

**Details and Restrictions:**

- Your certificate, along with valid ID, must be presented to the Case IH dealer in advance of delivery to receive the discount.
- If you have questions or need help obtaining the certificate, please call 208-239-4279 or visit your local Farm Bureau office.

FOLLOW LINK AT [IDAHOFBSTORE.COM](https://idahofbstore.com)  
TO PRINT YOUR CERTIFICATE



Together, we drive agriculture FORWARD

At Agri-Service, their team is proud to provide hardworking farmers like you with ag equipment you can count on.

Stop in and shop brands like Fendt®, Massey Ferguson®, Challenger®, and Hesston®.



**\$250 OFF ANY  
NEW TRACTOR PURCHASE\***  
when showing proof of valid Idaho  
Farm Bureau membership.

**\*Details and Restrictions:**

**Offer only available at the Blackfoot & Sugar City locations**

\*All programs and benefits are subject to change without notification.



# CATERPILLAR®

**SAVE UP TO \$2,750 ON CAT®  
EXCAVATORS, SKID STEERS,  
WHEEL LOADERS AND MORE!**

Eligible Idaho Farm Bureau members\* can save up to \$2,750 on the purchase or lease of eligible Cat® compact track loaders, compact and small wheel loaders, skid steer loaders, small dozers, backhoe loaders, mini hydraulic excavators and telehandlers.

Members receive an additional \$250 credit on select work tool attachments purchased with new Cat® machines. (Promotion excludes Buckets, Forks, Thumbs, and Coupler attachments). These discounts can be combined with any current retail discount, promotion, rebates or offers available through Caterpillar or its dealers, with the exception of the Cat® NCBA membership incentive.

#### Details and Restrictions:

- To redeem your discount, go to the [idahofbstore.com](http://idahofbstore.com) to print your discount certificate.
- Must be a valid member of a participating state Farm Bureau for at least 30 days to be eligible for discount.
- Members must present a discount certificate at time of purchase or lease to receive the discount.
- No limit on discount certificates available to members, but one certificate must be presented for each purchase or lease.
- If you have questions or need help obtaining the certificate, please call (208) 239-4279 or visit your local Farm Bureau office.

**FOR A COMPLETE LIST OF ELIGIBLE CAT®  
EQUIPMENT DISCOUNTS VISIT  
[CAT.COM/FARMBUREAU](http://CAT.COM/FARMBUREAU)**



**THE JOB PLATFORM FOR THE AGRICULTURE AND  
WESTERN INDUSTRIES.**

## 10% OFF

Basic Job or Pro Job\* subscription fee  
when providing proof of membership.

Use **IFBFMEMBER2023**  
during checkout

\*excludes Pro Unlimited Package

**[OFTHEWEST.CO](http://OFTHEWEST.CO)**



**Idaho Farm Bureau Members receive a 15%  
discount on an inaugural FEWA membership.**

Federation of Employers and Workers of America "FEWA" is a nonprofit trade association that helps farmers utilize the Federal Government's program to LEGALLY employ non-domestic, seasonal labor. By becoming a member of FEWA they will guide you through the process of the guest workers program so your business can continue to succeed.

FEWA Membership benefits include:

- Employ LEGAL temporary labor through the H-2A and H-2B work visa programs.
- A dedicated staff that will personally guide YOU and YOUR workers through the entire process.
- SAVE money by limiting your risk with Legal Counsel. In-house legal experts are available to members at no additional cost.
- Stay compliant with Government Regulations.
- Keep you up to date with government changes.
- Lobbying efforts in Washington, D.C.

Call 877-422-3392 ext 101 today to schedule your no-cost consultation about how to take advantage of this important program for Idaho farmers.

Visit [fewaglobal.org](http://fewaglobal.org) for  
more information

\*All programs and benefits are subject to change without notification.



**KEEP IT SIMPLE.**

Let Roe Painting focus on your coatings needs so you can focus on feeding America

**25% OFF MATERIALS & 10% OFF LABOR ON SERVICES ASSOCIATED WITH AGRICULTURAL AND INDUSTRIAL COATINGS**

Roe Painting's agricultural service offerings include barn staining and restoration, media blasting and competent application of industrial coatings to protect tanks, silos, grain bins, grain elevators, steel and aluminum buildings & structures, and equipment trailers with excellent results. They are also competent applicators of concrete floor coatings and containment- Fast cure polyurea/polyaspartic, FDA approved food grade floor coatings, flexible joint fillers for seamless floors, urethane cement systems, chemical resistant coatings, traditional epoxy and decorative flake and quartz systems.

- **Proof of membership must be presented prior to any discounts given.**

**BOISE • EAGLE • ELKO • FERNLEY • IDAHO FALLS • MERIDIAN • NAMPA • POCATELLO**



**Please call 208-647-0097 for a free consultation and estimate.**

**10% OFF FIRST SPRAY  
10% OFF AUTOMATIC FLY CONTROL SYSTEM\***

No Fly Zone of the Northwest is dedicated to providing its clients with affordable solutions and management for all your pest control needs.

- **Must present membership card for discount.**

\*Automatic Fly Control System installed in dairy and horse barns, kennels, and even outside porch areas. The system consists of a 55-gallon tank, pump, motor, and a timer that dispenses a misting system overhead. The natural chemical used is Pyrethrin and is harmless to all mammals. There is also a certified organic formula available.

**SERVING THE MAGIC VALLEY AREA**

**COMMITTED TO THE CUT.®” AT GRASSHOPPER, THEIR BELIEF IN INNOVATION IS MATCHED ONLY BY THEIR COMMITMENT TO QUALITY.**

**RECEIVE UP TO 12% OFF MSRP THE PURCHASE OF ANY NEW GRASSHOPPER ZERO TURN MOWER**



**Committed to the Cut.®**

- **Proof of valid and active membership required to take advantage of this savings**
- **Includes all models: M1 MidMount Series: 200, 300G EFI, 300, 400; V Series; 100V, 200V, 500V; FrontMount Series: 600, 700, 900; Stand-On Series: S026**
- **No other sales programs may be combined with this offer.**
- **Financing available at participating dealers. See dealer for available financing offers and to apply.**
- **See dealer for complete Farm Bureau offer details.**

**NATHAN'S SERVICE CENTER**  
217 N Front Street  
Arco, Idaho  
208-587-8959

**RMT EQUIPMENT**  
3450 N Black Butte Ct  
Nampa, Idaho  
208-376-3333

**G & R AG PRODUCTS INC CALDWELL**  
906 Simplot Blvd  
Caldwell, Idaho  
208-454-2288

\*All programs and benefits are subject to change without notification.



# Step Into a Brighter Farming Future with



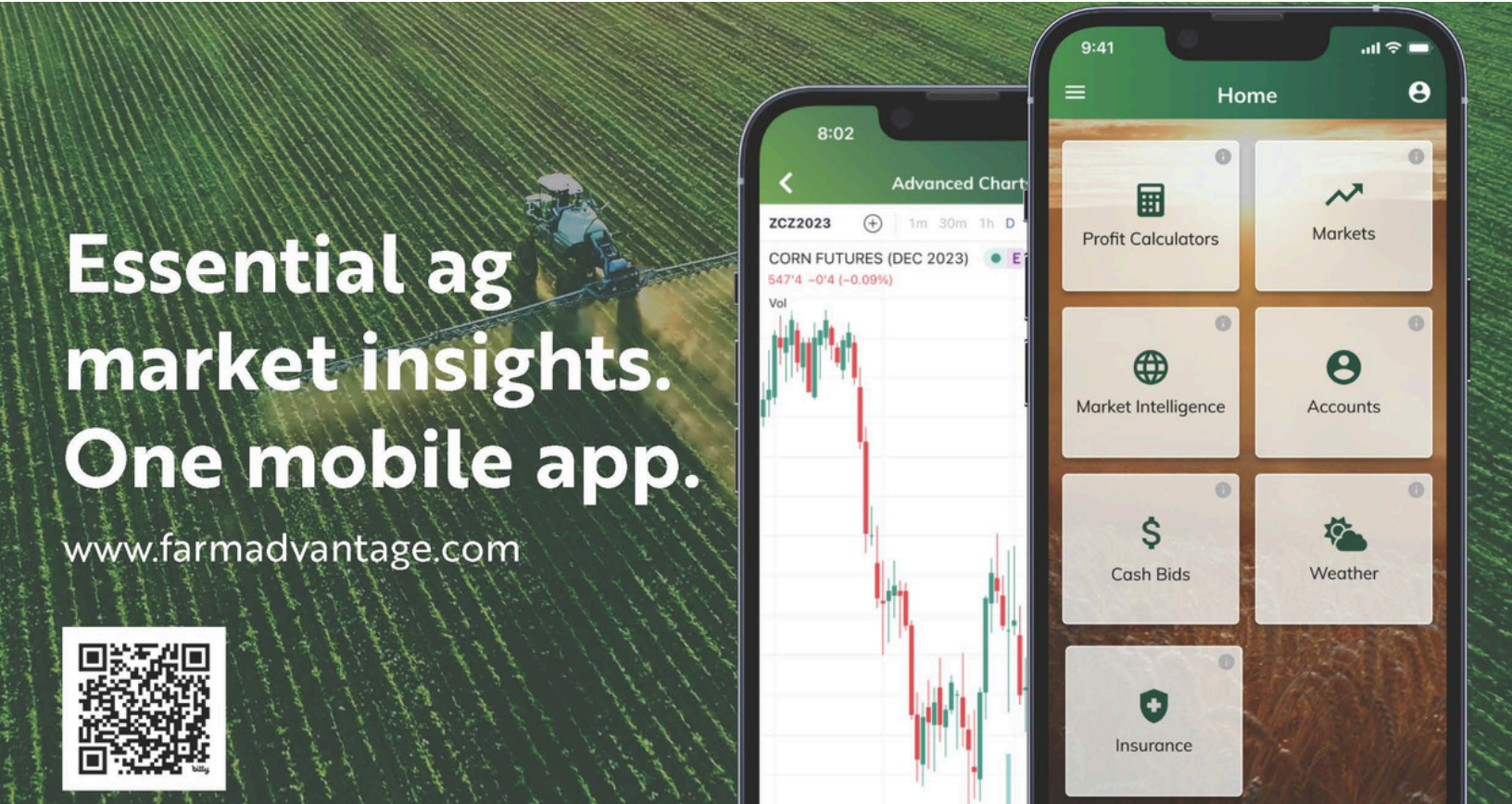
Your operations, your profits, and your future are in your hands. Literally. Farm Advantage is the app that puts essential agricultural insights and powerful market tools right at your fingertips.

Download for FREE at [farmadvantage.com](https://farmadvantage.com)

Use **PROMO CODE: FAID** (when creating an account)

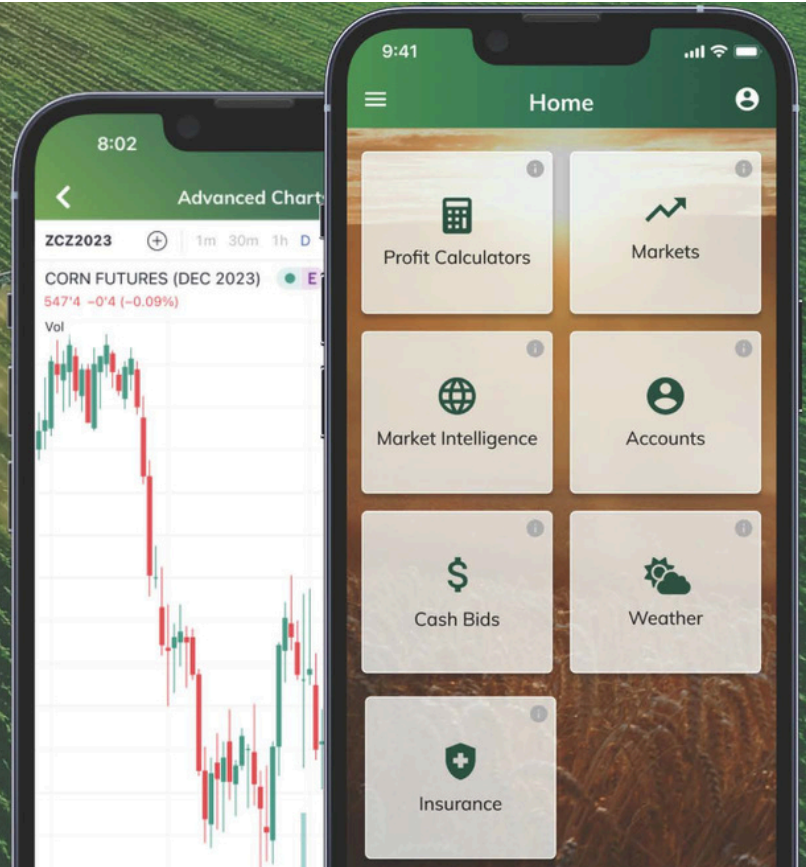
## Exclusive Farm Bureau Member Benefits

As a proud partner of the American Farm Bureau Federation, StoneX is offering a 10% discount on upgraded Market Intelligence packages for members. Go to [fb.org/StoneX](https://fb.org/StoneX) to get your discount code and explore subscriptions.



Essential ag  
market insights.  
One mobile app.

[www.farmadvantage.com](https://www.farmadvantage.com)



Part of StoneX Group Inc.

Trading swaps and over-the-counter derivatives, exchange-traded derivatives and options and securities involves substantial risk and is not suitable for all investors. The StoneX Group Inc. group of companies makes no representation that the use of Farm Advantage will result in positive and/or enhance your profitability. ©2023 StoneX Group Inc. All Rights Reserved.

\*All programs and benefits are subject to change without notification.



# AUTO SALES & MAINTENANCE



**\$500**  
Exclusive  
Cash Reward\*



Ford Super Duty

Farm Bureau Members receive \$500\* toward an eligible new F-150® Lightning®, Super Duty®, F-150, Ranger® or Maverick®.

Visit [FordRecognizesU.com/FarmBureau](https://FordRecognizesU.com/FarmBureau) today for complete offer details!

\*Farm Bureau Exclusive Cash Reward is exclusively for active Farm Bureau members who are residents of the United States. \$500 Exclusive Cash Reward on the purchase or lease of an eligible new 2023/2024/2025 Ford Maverick, Ranger, F-150, Super Duty or F-150 Lightning. This incentive is not available on Ranger Raptor®, F-150 Raptor, F-650\* and F-750\* Super Duty. This offer may not be used in conjunction with most other Ford Motor Company private incentives or AXZD-Plans. Some customer and purchase eligibility restrictions apply. Must be a Farm Bureau member for 30 consecutive days prior to purchase or lease and take new retail delivery from an authorized Ford Dealer's stock by January 2, 2025. See your authorized Ford Dealer for qualifications and complete details. Note to dealer: Claim in VINCENT using #32286.

## New Benefit



**\$10 DISCOUNT ON OIL CHANGE**

Sign your vehicles up for the [Idaho Farm Bureau/Jiffy Lube Signature Service Oil Change \\$10 Discount\\*](#) program.

\*This is a standalone discount and is not stackable with any other Jiffy Lube promotions or discount offers. Once an Idaho Farm Bureau membership is confirmed on the first oil change, the discount remains in effect for that specific vehicle (using Fleet #102851).

- Present a valid membership card or proof of insurance slip when signing up.
- Offer may not be valid at all locations.

\*All programs and benefits are subject to change without notification.

---

## CENTRAL IDAHO

---



### 5-CENT DISCOUNT ON FUEL.

- Discount applies to cash purchases only.
- Must present membership card for discount.

517 S Challis St, Salmon, Idaho

---



### 10% OFF MOST ITEMS

- Discount available at Salmon Napa Auto Parts location ONLY.
- Must present membership card for discount.
- Some exclusions apply.

725 S Challis St, Salmon, Idaho

---



### 10% OFF MECHANICAL REPAIRS

- Must present membership card for discount.
- Some exclusions apply.

1212 Shoup St, Salmon, Idaho

---



### 10% OFF PURCHASE OF NEW TIRES (MAXIMUM DISCOUNT OF \$250)

- Must present membership card for discount.
- Discount at Salmon Point S location ONLY.

2342 Main St, Salmon, Idaho

---

---

## EAST IDAHO

---



### 10% DISCOUNT ON OIL CHANGES

Valley Equipment and Irrigation-Arco is a small retailer who offers a large variety of goods and services to the Lost River Valley.

- Must present membership card for discount.

104 S Idaho, Arco, Idaho

---



### 1/2 OFF FIRST MONTH 3 ALARM OR 3 ALARM+ MONTHLY PASS PLANS THEN \$5 OFF ONGOING MONTHLY 3 ALARM OR 3 ALARM+ PLANS

- Must show valid proof of membership or liability card.
- Pricing is on a per vehicle basis.
- All other vehicles in the household and on the same credit card may be included in this MEMBERS ONLY pricing and may receive the same MEMBERS ONLY discount.
- Payments are recurring monthly but can be cancelled at any time. There are no contracts. Please provide at least 3 days notice when and if you decide to cancel in order to stop all future charges to your account.
- For MEMBERS who already use this service, ask the manager to assist you in transferring your current Monthly Pass Plan to the Idaho Farm Bureau Members Only plan to receive your discount.
- If you have any questions for this MEMBER ONLY benefit, contact Firehose Car Wash at 208-656-2347.

1269 E 17th St Idaho Falls, Idaho

---



### 10% DISCOUNT ON IN-STORE STOCK ITEMS\*

Since 2000, Preston Auto Parts has provided motorists in the Preston area with the best auto parts and customer service.

- Excludes special orders, store services and items already discounted.
- Must present membership card for discount.

17 S State St, Preston, Idaho

---

\*All programs and benefits are subject to change without notification.

---

## EAST IDAHO

---



**FREE FLAT REPAIRS ON PASSENGER AND LIGHT TRUCKS WHEN VISITING A RON KELLER TIRE STORE LOCATION OR**

**15% DISCOUNT ON ALL NON-EMERGENCY SERVICE CALLS OVER A 45-MILE RADIUS FROM STORE LOCATION.**

- Offer limited to **Preston and Malad locations only.**
- Proof of membership must be shown at time of service.
- Some exclusions may apply.

160 S State St., Preston, Idaho  
55 E 50 S, Malad, Idaho

---

## NORTH IDAHO

---



**CLEAN. SHINE. PROTECT.**

**COMPLIMENTARY CERAMIC COATING ON COVERED AREAS WHEN PURCHASING PAINT PROTECTION FILM OR VEHICLE WRAP, UP TO AN \$800 VALUE.**

**\$100 OFF A WHOLE-VEHICLE CERAMIC COATING TREATMENT, PROVIDING 3 YEARS OF PROTECTION FROM THE ELEMENTS AND PAINT FADING WHILE LEAVING A WONDERFUL SHINE.**

**COMPLIMENTARY 3-MONTH WINDSHIELD COATING WHEN PURCHASING AN "INSIDE AND OUT DETAIL", A \$29 VALUE.**

- Must present membership card for discount.
- Visit [glanzendetailing.com](http://glanzendetailing.com) or call 208-244-6961 to set up your appointment today.

**Post Falls, Idaho and surrounding areas**



\*All programs and benefits are subject to change without notification.

---

## NORTH IDAHO

---



**10% DISCOUNT ON PARTS, ACCESSORIES, APPAREL, & SERVICE**

- Proof of membership must be shown at time of service.
- Some exclusions may apply.

204 College Ave, St. Maries, Idaho

---



**10% OFF LABOR OR \$10 OFF ANY SERVICE**

**SILVERLAKE AUTOMOTIVE HAS A LOCATION TO SERVE YOU.**

- Must present membership card for discount.

274 W Hanley Ave, Coeur d'Alene, Idaho  
1603 E Sherman Ave, Coeur d'Alene, Idaho  
3380 E Mullan Dr, Post Falls, Idaho

---

## SOUTHWEST IDAHO

---



**10% OFF ALL PARTS, APPAREL, ACCESSORIES, AND SELECT IN HOUSE SERVICE**

Mile High Power Sports is your ONE STOP...FUN SHOP for all your DIRT, SNOW, and WATER needs! Their incredible Mile High Power Sports team, all power sports enthusiasts, have an extensive knowledge of all products they sell.

- Proof of membership must be shown at time of service
- Some exclusions may apply.

13924 Highway 55, McCall, Idaho

---



# DINING



**10% OFF MEAL**

- Proof of membership must be shown at time of service.
- Desserts are excluded.

405 Main St., Salmon, Idaho



**20% OFF ANY DRINK**

with the purchase of a breakfast burrito

- Proof of membership must be shown at time of service.

900 Shoup St, Salmon, Idaho



**10% OFF PURCHASE**

- Proof of membership must be shown at time of service.

402 W. Custer, Mackay, Idaho



**20% DISCOUNT**

on all drinks

- Proof of membership must be shown at time of service.

502 N Main St, Pocatello, Idaho



**\$1 OFF**

the purchase of first beer.

- Proof of membership must be shown at time of service.

305 Lander St, Pocatello, Idaho



**AWARD WINNING BBQ TRUCK SERVING  
SOUTHEAST IDAHO**

**10% OFF PURCHASE**

- Proof of membership must be shown at time of service.



**1/2 OFF AN ENTRÉE**

with purchase of one entrée of equal or less value.

- Proof of membership must be shown at time of service.

645 W. Broadway St, Idaho Falls, Idaho



**10% DISCOUNT**

on any purchase

- Proof of membership must be shown at time of service.
- This offer can't be combined with other promotions.
- Alcoholic beverages are excluded

219 E 3rd St N, Burley, Idaho



\*All programs and benefits are subject to change without notification.

# ENTERTAINMENT



**DISCOUNTED PRICE**  
**\$9.50 PER TICKET**

- Tickets must be purchased at a Farm Bureau office and are exclusive for members of Idaho Farm Bureau and Idaho Farm Bureau employees.
- Tickets have no expiration date.
- Tickets are non-refundable.
- Limit of 10 tickets per transaction.
- Valid for all regular ticket types only – Matinee, Child, Senior or Evening base tickets.
- Additional charges apply to upgrade amenities such as 3D or DBOX.
- Admissions are limited to available seating



**DISCOUNTED PRICE**  
**\$9.00 PER TICKET**

Simply take these tickets to the box office and exchange them for the movie ticket of choice. Discounts are best used for adults attending evening shows and should not be purchased for children (11 & under), seniors (60 & over), matinees, or special events.

## \$16.00 DATE NIGHT PACKAGE!

Package Passes available at your Local Farm Bureau Office.



461 Park Ave., Idaho Falls, Idaho



*Blackfoot  
Movie Mill*

369 W Bridge St., Blackfoot, Idaho

**PACKAGE INCLUDES: ADMISSION  
FOR 2 ADULT 2D TICKETS,  
2 LARGE DRINKS AND  
1 LARGE POPCORN**



2085 Niagra St., Idaho Falls, Idaho



464 E 5th St N, Burley, Idaho

## \$26 MOVIE PACKAGE

Package Passes available at your Local Farm Bureau Office.

**PACKAGE INCLUDES:  
ADMISSION FOR 2 ADULT TICKETS,  
1 MEDIUM DRINK, 1 MEDIUM POPCORN AND CANDY\***

\*1 free refill on drink and popcorn



\*All programs and benefits are subject to change without notification.



# Theme Parks



Twist, turn and fly on one of Lagoon's 50 rides. Feel your heart race on our X-Venture attractions. Slip and slide through whitewater waves at Lagoon A Beach. Take a trip back through the Wild West in Pioneer Village. Sing along with the best shows in town. Scare yourself silly at Frightmares in October.

## 2024 Ticket Prices \$74.95 + tax\*

\*Plus online service fees of \$1.00 per passport

- Discount tickets can be purchased online by using the Idaho Farm Bureau Promo code 2024IFB at [shop.lagoonpark.com](http://shop.lagoonpark.com).
- Members may purchase up to 12 passports per transaction.

DISCLAIMER: IF LAGOON IDENTIFIES THAT THIS OFFER IS BEING ABUSED, SOLD, PURCHASED, OR OFFERED TO ANYONE OTHER THAN IDAHO FARM BUREAU MEMBERS, EMPLOYEES, THEIR SPOUSES AND CHILDREN, RETIREES AND EMPLOYEES OF THE SUBSIDIARIES OF COMPANY, THE OFFER WILL BE IMMEDIATELY TERMINATED.

## ticketsatwork

Idaho Farm Bureau has partnered with [TicketsAtWork.com](http://TicketsAtWork.com) to provide members with **exclusive discounts**, special offers, and access to preferred seating and tickets to top attractions, theme parks, shows, sporting events, movie tickets, hotels, and much more. Save money on your next trip to Walt Disney World® Resort, Universal Studios®, SeaWorld®, Six Flags®, Cirque du Soleil®, performances in Las Vegas and New York City..

### Here's how to register:

- Go to [TicketsatWork.com](http://TicketsatWork.com) to create a **FREE** account
- Use company code: **KBFIFBF**
- Then log into [TicketsatWork.com](http://TicketsatWork.com) using your email and password.
- Proceed to purchase tickets and complete your order.

Members can place orders over the phone by calling customer service at 800-331-6483 (available Monday-Saturday, 8:30 am - 7:30pm and Sunday, 10am-6pm EST.). Be sure to have your dates correct when ordering. These tickets are non-refundable.

**Roaring Springs Water Park:**  
[www.roaringsprings.com](http://www.roaringsprings.com)  
Roaring Springs Full Day Ticket (2 & under FREE)  
**\$39.99 + tax (\$8 off): promo code: ifbrs**  
Triple the Fun Ticket R.S./WFZ Combo Ticket  
**\$67.99 + tax (\$12 off): promo code: ifb3x**

**Wahooz Family Fun Zone:**  
[www.wahoozfunzone.com](http://www.wahoozfunzone.com)  
Wahooz Ultimate Unlimited Fun Pass  
**\$46.99 + tax (\$8 off): promo code: ifbfun**  
Wahooz Jr Ultimate Unlimited Fun Pass (under 58")  
**\$39.99 + tax (\$8 off): promo code: ifbfun**

- Click Buy Tickets button (top right corner)
- Select Fun & Sun Corporate Club
- Select Tickets and add to cart
- Click on the shopping cart to view cart
- Enter Promo Code under Discounts
- Proceed to checkout

Print confirmation (or show on phone) to Roaring Springs/Wahooz ticket counter.

\*All programs and benefits are subject to change without notification.



# SAN DIEGO ZOO

Idaho Farm Bureau members can order and print their tickets for the San Diego Zoo and San Diego Zoo's Safari Park from your computer thru the Click and Go Wild online program by using the access code below.

How Do I Click and Go Wild with My Farm Bureau Benefit?

- Log onto [sandiegozoo.org](http://sandiegozoo.org)
- Select San Diego Zoo Tickets or Safari Park
- Select Tickets, click on the **SAVE NOW** button.
- Select the quantity of Tickets you want to purchase and click the Add to Cart button.
- In the Shopping Cart, type Enter Code "20066" and click on Apply. The page will automatically update with your discounted price.
- Continue to check out.



DRIVE-THRU WILDLIFE PARK

No vacation to the Yellowstone National Park or Grand Teton National Park region is complete without an adventure into the wild at Yellowstone Bear World, a drive-thru wildlife park. During your visit you will be surrounded by the free-roaming wildlife of North America as you drive your personal vehicle through the park. Wildlife you will see includes Rocky Mountain Elk, Bison, White-tail Deer, Mule Deer, Rocky Mountain Goats, Moose, and of course American Black Bear and Grizzly Bear.

- Idaho Farm Bureau members will receive \$1.00 OFF Individual Admission or \$10 OFF the Carload Rate when showing proof of an Idaho Farm Bureau Membership.

6010 South Bear World Rd, Rexburg, Idaho

**Bear Sightings Guaranteed!**



\*All programs and benefits are subject to change without notification.



Idaho Farm Bureau members can save **up to 30% OFF**. Be rewarded with Great Wolf Perks. You're going to love winding down the water slides, dining in one of the Northwoods-themed restaurants and building great family traditions.

For more information or reservations, visit [greatwolf.com](http://greatwolf.com) or call **800-905-WOLF (9653)**.

Use Corporate Code: **IDAH832A**.

- Must present valid membership ID or documentation at check-in.
- Valid on a per night basis and must be mentioned at time of reservation based on 2023 standard rates.
- Limited number of rooms available for each date. May not be valid during holiday and blackout periods or combined with any other discount or promotional offers.
- Multiple night minimum stay may apply.
- Offer based on 4 guests per room and must have one individual 21 years of age or older staying in each room.



Silver Mountain Resort (Near Kellogg, Idaho) offers discount ticket prices to Idaho Farm Bureau members through **Online Sales Only**.

To purchase Lift Tickets, Snow Tubing, Golf and Scenic Gondola Rides, please follow the instructions below:

- Go to the [idahofbstore.com](http://idahofbstore.com) and follow the link to [fareharbor.com/silvermt/items/](http://fareharbor.com/silvermt/items/)
- Simply select which product(s) you wish to purchase. (The discounted price will show up after you enter your promo code in the coupon code box.)
- Enter the discount (promo) code: **FARM**

For Lodging and Indoor Waterpark packages, please follow the instructions below:

- Please call **800-204-6428 opt. #2**
- Be sure to give the reservationist you are working with your company discount code: **FARM**

Some restrictions may apply. Visit the [idahofbstore.com](http://idahofbstore.com) for additional details.

---

## CENTRAL IDAHO

---



**BOGO-BUY ONE BOWLING GAME  
AND GET ONE GAME FREE**

- Shoe rental included
- Maximum 2 games per visit
- Offer good Tuesday-Friday
- Must show proof of membership for discount.

215 S. Church St., Salmon, Idaho

---

## EAST IDAHO

---



**20% OFF REGULAR PRICED  
INDIVIDUAL ADMISSION.**

- Offer cannot be combined with other offers or promotions.
- Farm Bureau members must present a valid Idaho Farm Bureau membership card or proof of insurance to receive this discount.

423 E Chubbuck Rd, Chubbuck, Idaho

---



**BUY (1) ONE ADMISSION,  
GET (1) FREE**

The Idaho Potato Museum is a unique museum which appropriately showcases Idaho's Famous Potatoes®. You'll be intrigued as you stroll through the historic Oregon Short Line Railroad Depot while discovering the world of potatoes.

Browse the gift shop for Idaho themed gifts and don't forget to visit the Potato Station Café to enjoy an order of fresh cut fries.

- Visit [idahopotatomuseum.com](http://idahopotatomuseum.com) for more information
- Farm Bureau members must present a valid Idaho Farm Bureau membership card or proof of insurance to receive this discount.

130 NW Main St, Blackfoot, Idaho

---

---

## EAST IDAHO

---



**15% OFF REGULAR PRICED  
INDIVIDUAL ADMISSION.**

**UNLEASH YOUR INNER LUMBERJACK**

- Offer cannot be combined with other offers or promotions.
- Farm Bureau members must present a valid Idaho Farm Bureau membership card or proof of insurance to receive this discount.

504 E Center St. Pocatello, Idaho  
153 N 2nd E St. Rexburg, Idaho

---



Idaho Farm Bureau members receive the following discounts when showing proof of a valid membership:

- Buy One Get One Free Bouldering Gym Day Pass (shoe rental not included)
- Buy One Get One Snowboard Package Rental
- \$5 off Bicycle Tune-Up

49 E Main St., Rexburg, Idaho

---

## SOUTH CENTRAL IDAHO

---



**[BEARDED AXE]**

**MAGIC VALLEY'S ONLY AXE-THROWING GYM**

**\$5 PER/HR DISCOUNT**

246 3rd Ave S., Twin Falls, Idaho

---



**\$5 OFF ANY DAY PASS**

- Must provide proof of Idaho Farm Bureau membership.

135 5th Ave S., Twin Falls, Idaho

---

\*All programs and benefits are subject to change without notification.



## SOUTHWEST IDAHO



**15% OFF  
CONCEALED CARRY &  
HOME DEFENSE  
FUNDAMENTALS COURSE**

Completion of this course allows participants to apply for their Idaho Enhance Conceal Carry and their Oregon Concealed Carry permits

Contact Wynn at **208-350-8085** or email [farmboyoutdrs.com](mailto:farmboyoutdrs.com) for more information.

**SERVING SOUTHWESTERN IDAHO**



**20% OFF  
MERCHANDISE  
PURCHASED IN THE  
GOLF SHOP**

- Proof of membership must be shown at time of service.
- All discounts apply to Farm Bureau Member cardholders only and not to a group.

**1880 E 8th N, Mountain Home, Idaho**

## SOUTHWEST IDAHO



Whether you're firearm obsessed, don't own a firearm, or somewhere in between, SimShot offers a wide variety of training to fit your needs. They provide a safe and welcoming environment to conduct training, whether you want to practice drills, have fun running shooting courses, or experience real-life scenario training.

- Visit [simshotmeridian.com](http://simshotmeridian.com) for more information
- Farm Bureau members must present a valid Idaho Farm Bureau membership card or proof of insurance to receive this discount.

**357 Watertower Ln Suite C, Meridian, Idaho**



FOR DISCOUNT CODES AT YOUR FINGERTIPS

# DOWNLOAD THE FBHUB MOBILE APP



*Start saving today!*



\*All programs and benefits are subject to change without notification.

---

# HEALTH & BEAUTY

---



**NO MORE waiting rooms, deductibles, contracts. No insurance is necessary!**

KonnectMD is a non-insurance healthcare membership that offers anyone convenience by providing nationwide, 24/7 access to virtual urgent care, primary care, and behavioral health treatments. Even if you have insurance, you can use KonnectMD to save thousands by avoiding copays and deductibles for traditional healthcare needs.

Sign up and save an average of \$2700/year for traditional healthcare expenses. The future is impossible to predict. When the unexpected happens, you can rest assured knowing that KonnectMD will be there.

**Visit the [idahofbstore.com](http://idahofbstore.com) for a link to a member's exclusive page and save 15% on a membership today!**



**Great Hearing. Great Benefits**  
That Simple

Great Hearing Benefits works to improve hearing health, which is essential to overall health. They offer the latest hearing aid technology at significantly discounted prices. As an Idaho Farm Bureau member, you have access to Great Hearing Benefits offer, including:

- Discounted pricing on today's top hearing technology
- Free 60-day trial
- 3-year warranty & service\*
- 5,000+ hearing care locations nationwide
- Share your benefit with up to 3 immediate family members
- In-person or virtual appointments available

\*Visit any one of Great Hearings participating partner locations for hearing aid service or warranty repair. If your hearing aids are lost, stolen or damaged within the first three years of you owning them, they will replace them! Deductible required.

Go to [idahofbstore.com](http://idahofbstore.com) to get more information



The Canadian Pharmacy is a Canadian company located in Winnipeg, Manitoba. The pharmacy is an operating pharmacy that services local Canadian customers and U.S. mail order customers alike. The Canadian government has placed price restrictions on drug manufacturers which may provide a substantial savings to Idaho Farm Bureau members when ordering through this reputable source.

- **Contact the pharmacy directly @ 866-335-8064 and use Code IDFB to check the pricing of a specific prescription drug before filling out enrollment forms.**
- **Access may also be gained through the pharmacy's internet site at [thecanadianpharmacy.com](http://thecanadianpharmacy.com)**
- **Idaho Farm Bureau members are provided free shipping.**



Dental Benefit Program is not an insurance program. This program is contracted dental rates with participating dentists for Idaho Farm Bureau members who are paying out-of-pocket.

Go to [idahofbstore.com](http://idahofbstore.com) to get more information and to sign up today.

\*All programs and benefits are subject to change without notification.





Did you know more than 90% of ground and air ambulances are out-of-network, exposing you and your family to over \$50,000 in out-of-pocket costs?

Idaho Farm Bureau members are now eligible for discounted membership pricing with the nation's leading ground and air ambulance membership program offered by EVACU.

Idaho Farm Bureau members and their families will have access to all of the following services anywhere in the United States:

- Ground & Air Medical Transportation with no provider or network limitations.
- Recovery Transportation to recover in a hospital closer to your family, friends, and home
- Advanced Care Transfer to the nearest hospital capable of providing the medical care that you may need.
- Visitor Transportation so you can be surrounded by family or friends, rather than alone in a hospital far from home.
- Return Transportation to get you and your family home once you are released from medical care.
- Pet & Livestock Return to get your small and large animals back home safely.
- Vehicle & Trailer Return to get your car truck, boat, motorcycle, RV, and more back in your driveway.
- Organ Transport Transportation to bring you (or your organ) to the site of your procedure.
- Mortal Remains Transportation so that your family can celebrate your life without added heartache.

Visit [MyEvacu.com/ifb](http://MyEvacu.com/ifb) to learn more.



Idaho Farm Bureau members receive a discount when signing up for an air ambulance membership. Members can pick up an application at their local Farm Bureau office or contact the air ambulance provider @ 800-574-9464 and identify as an Idaho Farm Bureau member when signing up for membership.

- **Reciprocity may be available between the different programs. Call the air ambulance provider to learn about their service areas and to purchase membership.**



Protect your loved one today with LifeStation. There are no upfront fees. LifeStation covers the shipping cost to Idaho Farm Bureau members. The monthly rates listed are all-inclusive of equipment and monthly monitoring.

**Members can find more information and order service by calling 877-288-4958 or by visiting [lifestation.com](http://lifestation.com).**



The FREE Prescription Drug Card is perfect for the uninsured and underinsured, but EVERYONE is eligible for a free card. It's pre-activated and can be used immediately at over 68,000 pharmacies nationwide. All prescriptions processed through the program are confidential. Great for people with Health Savings Accounts (HSAs), High Deductible Plans, Medicare Part D, or Non-Covered Medication. The card can be used to get discounts on most brand name and generic medications, **with discounts up to 75%.**

Visit the [idahobfstore.com](http://idahobfstore.com) for more details.

## CENTRAL IDAHO

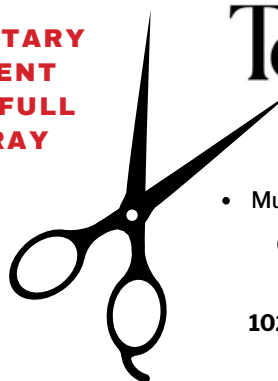


**COMPLIMENTARY  
NEW PATIENT  
EXAM AND FULL  
SPINE X-RAY**

- Must present membership card for discount.

**Give Salmon River Chiropractic a call today  
208-756-2022 to set up an appointment.**

**104 S Daisy St. A, Salmon, Idaho**



**Total Image**  
*Salon & Spa*

**20% OFF SERVICES**

- Must present membership card for discount.

**Call to make your appointment today  
208-993-1309**

**102 Courthouse Dr., Suite D, Salmon, Idaho**

\*All programs and benefits are subject to change without notification.

---

## EAST IDAHO

---



**10% OFF**  
**ALL CASH-BASED SERVICES.**

Root Cause Integrative Medicine works with individuals dealing with chronic fatigue, autoimmune disease, digestive issues, heart burn, leaky gut syndrome, irritable bowel syndrome, back pain, asthma, chronic sinus issues, ear infections, and more. They offer functional medicine (treating the root cause), natural medicine (herbs), and conventional medicine. Integrative options involve simple healing methods including proper nutrition, optimal sleep, stress reduction, gut healing, hormone balancing and replacement, and reducing toxicant burden.

- **To check in-network coverage options with major insurance carriers, call 208-497-0429.**
- **Visit [rootcauseintegrativemedicine.com](http://rootcauseintegrativemedicine.com) for details.**

**1547 S Midway Ave #B, Ammon, Idaho**



**THE VALLEY'S PREMIER EYE & VISION SPECIALISTS  
WITH OVER 50 YEARS OF EXPERIENCE**

**25% DISCOUNT ON PURCHASED EYEWEAR**

- **May not apply to all vision plans**
- **Must present membership card for discount.**
- **Call the following locations for more information**
  - **Idaho Falls 208-552-5594 or 208-529-4333**
  - **Pocatello 208- 637-0841**
  - **Rexburg 208-356-0881**
  - **St. Anthony 208-624-3231**



**DERMACHIC**  
LASER & SKINCARE CENTER

**10% OFF ON ALL SKINCARE PRODUCTS\***

**"BE GOOD TO YOUR SKIN!  
YOU WILL WEAR IT EVERY DAY FOR THE REST  
OF YOUR LIFE."**

DermaChic knows everyone's skin is unique. They have a variety of skincare solutions to treat your specific skin's needs.

- **Excludes all services and procedures. \***
- **Must present membership card for discount.**
- **Call or text 208-359-5600 and schedule your appointment today!**

**393 E. 2nd North, Rexburg, Idaho**

---

## NORTH IDAHO

---



Idaho Farm Bureau Members can receive a **complimentary 10-Day VIP Pass** to use or to give out to family or friends who are local residents. The 10-Day VIP Pass can be picked up at PEAK Health and Wellness Centers.

**940 W Ironwood Dr. Coeur d'Alene, Idaho**  
**95 W Centa Dr. Hayden, Idaho**  
**927 E Polston Ave. Post Falls, Idaho**



Idaho Farm Bureau members are eligible to receive a **Farm Bureau Wellness Package** from Pinnacle Physical Therapy. The package includes a **complimentary 20-min consultation, a Guide to Manage Back Pain, and an exercise band.**

**1590 E Polston Ave Ste B, Post Falls, Idaho**

\*All programs and benefits are subject to change without notification.



# HOME & OFFICE



Idaho Farm Bureau members save **up to 75% OFF** on office, home and school supplies online at ODP Business Solutions (formerly Office Depot Business Solutions)! Enjoy exclusive pricing and discounts on office essentials, toner, paper, cleaning products, breakroom items and more.

Access Contract Pricing & Deepest Discounts Online:

- **Up to 75% off Best Value Products – plus thousands of items discounted below retail**
- **Ink & Toner Discounts – up to 20% off the products you need**
- **Low Copy/Print Pricing – save 60% off black & white copies | 34% off color copies**
- **Cleaning & Breakroom Items – 400+ products with savings up to 51%**
- **Free Delivery on Orders Over \$50 – Or order online & pick up at any Office Depot OfficeMax store**

**Register Now: [IFBF.SavingCenter.net](http://IFBF.SavingCenter.net)**



Idaho Farm Bureau members will receive **10% OFF any Titan Telescoping Flagpole kit, plus free shipping** on all items in the cart.

- Visit the Flagpole Farm website at [flagpolefarm.com](http://flagpolefarm.com) to place your order.
- Enter Coupon code: **Farm Bureau** at checkout to receive discount.



Valley Wide Cooperative, the #1 propane dealer in the state of Idaho, offers the members of Idaho Farm Bureau a discount of:

- **5 cents per gallon** on propane to our residential routed customers on **Regular Scheduled Delivery**.
- New Customer incentive, **10% discount** off new leased tank installations and **10 cent per gallon** on first fill.
- **10% discount** on all residential propane appliances and appliance installation (water heater/cook stove/fireplace/insert fireplace).

**Proof of membership must be presented prior to any discounts given.**



Rainy Day Foods, previously a division of Walton Feed Inc., is known for providing quality dehydrated and freeze-dried food storage. Rainy Day Foods is committed to offering their customers the highest quality of edible grains, dehydrated imitation meats, vegetables, fruits and freeze dried products available as well as items used for storing these products and other emergency supplies. Whether you are looking for food products for meals that can be prepared quickly and easily or you prefer to prepare your meals from scratch using your favorite basic ingredients, Rainy Day Foods can fill your needs.

- Idaho Farm Bureau members can receive a **20% discount** on any product packaged in a #10 or #2.5 sized can when placing their order online at [rainydayfoods.com](http://rainydayfoods.com) or by telephone at 208-847-3357 and using the Exclusive Discount Code **FBJ2022** in the “Comments” section of the order form.
- Discount prices do not apply to sale or clearance items.
- Note: The confirmation email you receive of your order will not reflect the 20% discount. The discount will be applied to your order at the time of billing.



## **SPECIAL SUBURBAN PROPANE MEMBERS- ONLY PRICING**

- Discount is for new purchases only
- Call dealer for full details

**Boise area 208-375-4254**  
**Twin Falls area 208-733-4608**  
**Pocatello area 208-232-1723**

\*All programs and benefits are subject to change without notification.



**10 CENTS LESS PER GALLON**

Propane power can fuel your life-in your home, around your yard, and on the go.

Save 10 cents/gallon on propane from AmeriGas for eligible Idaho Farm Bureau members who are new or existing customers of AmeriGas.

- Offer Valid from May 22, 2023 through May 22, 2024 for new and existing eligible AmeriGas residential and commercial customers who are members of the Idaho Farm Bureau.
- AmeriGas Cylinder Exchange and National Account customers are not eligible for the discount, even if they are members of the Idaho Farm Bureau.
- The per-gallon price for propane for each members who meets the eligibility criteria will be discounted ten-cents (\$.10) per gallon from the price AmeriGas would have otherwise charged such member.
- To qualify, complete the form at: [www.amerigas.com/idaho-farm-bureau-partnership](http://www.amerigas.com/idaho-farm-bureau-partnership), and once membership is verified and, for new customers, the new customer account set-up is completed, the member discount will be applied to the customer's account within thirty (30) days.
- The member discount will expire for all members on May 22, 2024.
- The member discount does not apply to any fixed or guaranteed pricing, advance purchases of propane by a member or any propane purchases made prior to the date the members applies for the member discount.
- The member discount does not apply to any fees, services, taxes, or surcharges that may be applicable.
- Agreement to AmeriGas's propane supply agreement is required.



**Affordable Protection You Can Count On**

**\$30 GIFT CARD FOR YOUR FIRST MONTH'S ENROLLMENT**  
**\$25 GIFT CARD FOR REFERRALS**

Idaho Farm Bureau members receive a **\$30 gift card for their first month's enrollment fee** when signing up for a dual plan with LegalShield. Members will also receive a **\$25 gift card** for each individual they refer that enrolls with LegalShield.

**Contact Jackie Johnson**  
**Small Business & Employee Benefit Specialist**  
**406-360-5707**

**SHIELDBENEFITS.COM/IFBF**

\*All programs and benefits are subject to change without notification.



**10% DISCOUNT ON MATERIALS**

You might not realize it when stepping inside your neighborhood Carpet One, but they are part of a worldwide cooperative with over 1,000 stores. That means their customers get the best of both worlds: the service of a local business with the savings and selection of a national chain. Through deep experience, tools, and technology, Carpet One's experts can determine the perfect floors for any need or budget.

Carpet One takes pride in what they do and are eager to help you find the right floor for your needs.

Some restrictions apply. Visit the [idahofbstore.com](http://idahofbstore.com) for more information or call your local Carpet One store.

**Pocatello • Idaho Falls • Twin Falls • Lewiston**  
**Nampa • Ponderay**



**25% ON PAINT AND SUNDRY ITEMS.**

Present the account number **9061-3888-8** at the desk when paying for items.



**25%-35% ON PAINT**

at participating Kelly-Moore locations

Use account number **FA5500.**



**15% OFF DO-IT-YOURSELF LAWN FERTILIZER SUBSCRIPTION**

Have your lawn care program delivered. The lawn fertilizer you need for a healthy yard delivered to your door when it's time to apply.

**Use promo code: FARBUREAU**

**Visit SWARDYARD.COM for more details.**



---

## CENTRAL IDAHO

---



### 50% OFF GIFT MEMBERSHIPS

- Must provide proof of Idaho Farm Bureau membership

Call 208-756-2221 for more information

519 Van Dreff St., Salmon, Idaho

---



### 10% DISCOUNT

- Must provide proof of Idaho Farm Bureau membership

11 Cooper Circle, Salmon, Idaho

---

## EAST IDAHO

---



### Snowcap Storage

The Smallest Things Make the Biggest Difference

### 10% OFF MONTHLY RATE

- Must provide proof of Idaho Farm Bureau membership

Visit [snowcapstorage.com](http://snowcapstorage.com) for more information

149 N 3850 E, Rigby, Idaho

---

## NORTH IDAHO

---



### 10% OFF THE FIRST MONTH'S RENT

- Must provide proof of Idaho Farm Bureau membership

Contact 208-245-1562 for more details.

6th & Spring, Fernwood, Idaho

---

---

## SOUTH CENTRAL IDAHO

---



**\$5 OFF MONTHLY  
SERVICE CHARGES**

TELCO

**THE INTERNET YOU'VE BEEN WAITING FOR**  
HIGH-SPEED INTERNET SERVING CASSIA, MINIDOKA, AND LINCOLN COUNTIES.

At ETS, they want you to have the fastest, most reliable internet possible. That's why they have built several towers throughout Cassia, Minidoka and Lincoln, each dedicated to serving a small geographic area so you are able to enjoy faster, more reliable internet, even during peak hours.

**Use promo code: FarmETS**

- Check their website at [etstelco.com](http://etstelco.com) to see if ETS is available in your neighborhood.
  - Then sign up at [etsfast.com](http://etsfast.com) and chose the high-speed internet plan that is right for you!
- 

## SOUTHWESTERN IDAHO

---



**\$50 OFF**

### THE STARTUP OF A STORAGE UNIT RENTAL

Trust Storage offers a variety of storage units to serve the storage needs of Boise, Idaho and the surrounding area.

- Must provide proof of Idaho Farm Bureau membership

Contact Trust Storage at 208-877-2155 for clean, affordable and secure storage.

6400 S Maple Grove Rd, Boise, Idaho  
1808 S Locust Grove Rd, Meridian, Idaho

---



\*All programs and benefits are subject to change without notification.

---

# FINANCE & INSURANCE

---



A FARM BUREAU SERVICE IN IDAHO

Founded by Idaho farmers and ranchers in 1947, Farm Bureau Insurance Company of Idaho is one of Idaho's leading auto insurers, the second largest writer of all insurance lines in Idaho, the largest writer of farm and ranch insurance in the state, and the largest property and casualty insurance company based solely in Idaho. The company was recently recognized by Forbes as Idaho's "Best-In-State" insurance company for homeowners insurance. Farm Bureau Insurance is proud to protect what matters most to its customers.

Visit [idahofarmbureauinsurance.com](http://idahofarmbureauinsurance.com) for an agent near you.



Idaho Farm Bureau Financial Services has been in business since 1961 offering consumer loans and investment options to all Idaho residents.

They offer a wide array of competitive lending options such as auto loans, RV loans, ATV & UTV loans, boat loans, mobile home loans and real estate loans. They take pride in trying to find ways to help finance the hopes and dreams of our members.

Visit [idfbfs.com](http://idfbfs.com) or contact your local agent to learn more.



Your business and employees deserve the best. That is why your Farm Bureau agent has selected Aflac to offer a variety of supplemental insurance benefits solutions-and more as part of an enhanced employee benefits experience. Farm Bureau Mutual Insurance Company of Idaho and Aflac are committed to helping you.

Visit [idahofarmbureauinsurance.com](http://idahofarmbureauinsurance.com) for an agent near you.



\*All programs and benefits are subject to change without notification.





Farm Bureau Bank has built its entire existence around the lifestyle and needs of farmers and ranchers across America. Here to help grow traditions, give back to agricultural communities and offer financial convenience for your unique way of life, Farm Bureau Bank is committed to serving you.

Proudly serving Farm Bureau members with benefits such as:

- High-Earning Deposit Accounts
- Personal & Business Credit Cards
- Vehicle & Equipment Loans
- Business Banking
- ...and more!

Visit [farmbureau.bank](http://farmbureau.bank) to learn more.

# Farm Bureau® Scholarship Program

Do you want to continue your education?

Would you like more money to help with that endeavor?



Scholarships are available to a member of an Idaho Farm Bureau family for one year of higher education at an institution of their choice. Contact your local Farm Bureau county office for deadlines or visit the [idahofbstore.com](http://idahofbstore.com) and follow the link for more details.



Farm Bureau Insurance Company of Idaho agrees to pay a **\$1,000 reward** to the person(s) who furnishes information that leads to the arrest and conviction of any person or persons for theft, arson, or vandalism on premises in Idaho or in connection with a motor vehicle or personal property owned by an eligible Idaho Farm Bureau member.

Reward signs available at your local county Farm Bureau office.\*  
\*Charges may apply.

\*All programs and benefits are subject to change without notification.

# RETAIL SHOPPING



Quality Workwear That Looks Good



KEY Apparel's 110+-years of experience in the workwear clothing industry not only means they make the most reliable, durable workwear for rugged use and office-wear, but also means they offer the best value. Idaho Farm Bureau members can **\*save up to 20% on online purchases** with **free shipping on orders over \$75**. Members also have access to the KEY Business Design Lab to create custom-branded KEY apparel for their business. Go to [idahofbstore.com](http://idahofbstore.com) and follow the link to start saving today!



Access to Grainger's entire catalog of more than 1.5 million items for discounts which can be used on your farm, at your business and for your home. Fast shipping with orders delivered when you need them—next-day delivery on most orders.

Visit [grainger.com/farmbureau](http://grainger.com/farmbureau) to:

- Register for Grainger online using Idaho's state Grainger account number: **855920930**
- Affiliate your existing Grainger account number to the American Farm Bureau program by contacting Grainger Customer Service at **1-800-GRAINGER**
- Shop on Grainger.com® to see your pricing once affiliated, registered and logged in



Dungarees carries a massive inventory of premium men's and women's work wear brands, including one of the largest selections of Carhartt in the nation. Featured brands include Ariat, Carhartt, CAT, Timberland PRO, Wolverine and YETI.

Idaho Farm Bureau members save:

- 10% discount on orders under \$200**
- 15% discount on orders over \$200**
- Free shipping on all orders over \$55**

Check out [idahofbstore.com](http://idahofbstore.com) to learn more.

\*Some exclusions apply

\*All programs and benefits are subject to change without notification.





Idaho Falls, ID • Pocatello, ID

**20% OFF MSRP BIKES**

**30% OFF MSRP APPAREL & ACCESSORIES**

- All bikes in store will be available at 20% OFF MSRP for Idaho Farm Bureau members and immediate family.
- All apparel and bike accessories will be available at 30% OFF MSRP for Idaho Farm Bureau members and immediate family.
- Discount cannot be applied to already posted discount items.
- Must provide proof of Idaho Farm Bureau membership.
- In-store financing available.

Visit [cbibikes.com](http://cbibikes.com) for more information

792 E Iona Rd, Idaho Falls, Idaho  
1444 Yellowstone Ave, Pocatello, Idaho



**CENTRAL IDAHO**



**15% OFF MERCHANDISE**

Go to [serpentskincamo.com](http://serpentskincamo.com) to place your order.

Use Promo code: **SSC15**

Serpent Skin Camo® is a family owned and operated business based in rural Idaho. With the idea for Serpent Skin Camo® being conceived by a 100% combat disabled Vietnam veteran, it was their goal to create an effective, high-quality product that was made, right here, in the USA. Serpent Skin Camo® believe strongly in the American dream of do-it-yourself free enterprise and have followed this belief in building Serpent Skin Camo®.



**VETERAN OWNED**



**10% OFF PURCHASE**

no exceptions

- Must provide proof of Idaho Farm Bureau membership
- Discount applies to Salmon, Idaho location only.

532 Main St, Salmon, Idaho

\*All programs and benefits are subject to change without notification.



---

## NORTH IDAHO

---

*Matt Leitholt*  
PHOTOGRAPHY + FILM

Located in the Spokane, Washington and surrounding area, Matt Leitholt Photography provides top-rated commercial photography, wedding photography, senior portraits and environmental portraits that will provide you with excellent quality memories and leave you with a great experience.



**\$200 OFF WEDDING PACKAGE**  
**\$50 OFF FAMILY PORTRAIT**  
**\$10 OFF HEADSHOT**

- Proof of membership must be presented at the time of the consultation.
- This offer can't be combined with other promotions.
- Some restrictions may apply

Contact Matt Leitholt Photography for more  
information (208) 651-7151  
[mattleitholt.com](http://mattleitholt.com)

\*All programs and benefits are subject to change without notification.



# TRAVEL



## Hotels



### UP TO 20% OFF STANDARD ROOM RATE.

- This program requires advanced reservation.
- Members call **800-258-2847** and use the Idaho Farm Bureau discount code **00209550** to receive discounted rates.
- Members may also visit [choicehotels.com](http://choicehotels.com) and chose "Special Rate-Best Available" option. The discount code **00209550** can then be entered into the Special Rate/Corp ID box.



### 20% OFF THE "BEST AVAILABLE RATE" at participating Wyndham Hotels & Resort locations

- Book online at [wyndhamhotels.com](http://wyndhamhotels.com)
- Book by phone:
  - Call toll-free: 877-670-7088
  - Super 8 call: 800-454-3213
  - Wyndham Hotel & Resorts: 866-854-1604

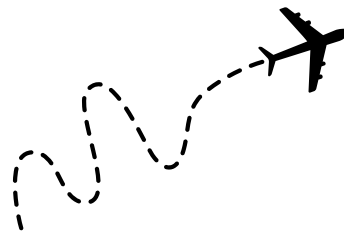
Use Farm Bureau Corporate code# **8000002020** when making reservations.



### 15% OFF BEST AVAILABLE RATES

at participating Motel 6 and Studio 6 locations

- For reservations, call **800-466-8356** using code **CPIDFARM** or visit the [idahofbstore.com](http://idahofbstore.com) for a direct link.



\*All programs and benefits are subject to change without notification.

## CENTRAL IDAHO



### 10% DISCOUNT

on all rooms without any exclusion

- Must provide proof of Idaho Farm Bureau membership.
- Subject to room availability.

Call **208-756-4424** for reservations.

**13 Gott Lane, Salmon, Idaho**

## EAST IDAHO



The Victor Apartments has (3) two-bedroom and (1) three-bedroom units available for short-term reservations. The large and plentiful windows provide a light atmosphere with expansive mountain views. The units are equipped with new appliances and flat screen TVs. Guests also enjoy their own private patios. Victor, Idaho combines the charm of a small town with premier outdoor sporting activities. Being equal distance between two renowned ski resorts, the world-famous Jackson Hole Mountain Resort and Grand Targhee, guests may experience some of the best skiing around. During warmer months, take advantage of Victor's premier outdoor sporting activities. Enjoy hiking and biking the less traveled trails with better fishing than the Jackson side. This is Teton Valley lodging at its finest— more relaxed, three hours more sunlight in summer and a more genuine town.

Call **307-222-3829** to make reservations today and mention the code: **farmbureau** to receive a discount.

**60 S Beryl Ave., Victor, Idaho**



### 10% DISCOUNT DURING PEAK SEASON

(May 15 to Sept 15) Excludes Friday, Saturday, Sunday & Holidays

### 20% DISCOUNT DURING OFF-PEAK SEASON

(Sept 16 to May 14) Excludes Friday, Saturday, Sunday & Holidays.

- Must provide proof of Idaho Farm Bureau membership.
- Subject to room availability.

Call **208-852-2124** or visit [cubriverguestranch.com](http://cubriverguestranch.com) to book your next special event today at

**Cub River Lodge, Guest House & RV Park.**

**1942 N Deercliff Rd., Preston, Idaho**

## NORTH IDAHO



### 10% OFF

### THE SCENIC 6 RV PARK DAILY RATE

The Scenic 6 RV Park has 22 RV spaces and five dry-camping cabins that are available to rent. The Scenic 6 RV Park is located in north-central Idaho, 17 miles north of Moscow, 50 miles north of Lewiston and 72 miles south of Coeur d'Alene making it a great base camp for your family adventures.

The RV Park is open year-round and has many amenities available: park playground, picnic shelters, bathrooms/showers and Wi-Fi. The park features: 0.8 walking path, Pickleball Court, Horseshoe Pits (2), Bocce Ball Court and a 9-hole Frisbee Golf Course. **BRING YOUR GEAR!**

- Must provide proof of Idaho Farm Bureau membership.
- Call **208-875-0808** to make your reservation.

**125 6th St., Potlatch, Idaho**

## SOUTH CENTRAL IDAHO



**Best Western PLUS**  
BURLEY INN & CONVENTION CENTER



### 10% DISCOUNT

### BEST WESTERN PLUS BURLEY INN & PERKINS-BURLEY

- Must provide proof of Idaho Farm Bureau membership.
- For reservations, call **208-678-3501** and mention your Idaho Farm Bureau Membership.
- Discounts not combined with other offers

**800 N Overland Ave, Burley, Idaho**



\*All programs and benefits are subject to change without notification.



# Rental Cars



## **PAY NOW™ AND SAVE UP TO 35% OFF BUDGET RENTALS\***

Idaho Farm Bureau members can save up to 35 percent off Budget base rates with PAY NOW\* for max savings with Budget Customer Discount (BCD) number Y775712. In addition, enjoy additional offers\*\* like dollars off, a complimentary upgrade, or a free weekend day. Visit [Budget.com/IDFB](http://Budget.com/IDFB) or call 800-218-7992 to make a reservation.

Budget Car Rental operates one of the world's best-known car rental brands with approximately 5,450 locations in more than 165 countries.

\*Discount rates may vary between 10 and 35 percent, depending on time of year, availability, selection of PAY NOW™, and other factors.  
\*\*Farm Bureau discount may NOT be stacked with other BCD corporate or membership discount



## **PAY NOW™ AND SAVE UP TO 35% OFF AVIS RENTALS**

Idaho Farm Bureau members can save up to 35 percent off Avis base rates with PAY NOW\* for max savings with Avis Worldwide Discount (AWD) number A298812. In addition, enjoy additional offers\*\* like dollars off, a complimentary upgrade, or a free weekend day. Visit [Avis.com/IDFB](http://Avis.com/IDFB) or call 800-331-1212 to make a reservation.

Avis Car Rental operates one of the world's best-known car rental brands with approximately 5,450 locations in more than 165 countries.

Discount rates may vary between 10 and 35 percent, depending on time of year, availability, selection of PAY NOW™, and other factors.  
\*\*Farm Bureau discount may NOT be stacked with other AWD corporate or membership discounts



## **5% OFF REGULAR RETAIL PRICE** all car classes on the daily rate of a rental vehicle.

- Members make either a reservation online at [enterprise.com](http://enterprise.com) or call 800-736-8222
- Use code CID2197



## **CONTRACTED RATES**

- Call 1-800-654-3131
- Give the Hertz Customer Service Representative the "Discount/CDP/Club Code" 0409226



## **Truck Rental**

### **20% OFF**

on consumer rental rates and mileage charges

Visit [BudgetTruck.com/FarmBureau](http://BudgetTruck.com/FarmBureau) or call 800-566-8422 and provide the Farm Bureau Account number 56000127747 to make a reservation today!



## **\$10 DISCOUNT**

- Discount applies only to "ONLINE" reservations only
- To find the price or availability of a shuttle go to [saltlakeexpress.com](http://saltlakeexpress.com)
- Use Coupon Code: farmbureau

*Notice: The Salt Lake Express does not authorize parking at any of its stops. Boarding locations are provided as a courtesy by the respective businesses, but they do not have any liability or obligation to our passengers. Salt Lake Express does not have representatives at any of its stops. If you have a question about our service including the stops, please call their office.*

\*All programs and benefits are subject to change without notification.

# LIST OF LOCAL BENEFITS

## CENTRAL IDAHO

- **AUTO SALES & MAINTENANCE**
  - 93 Mini Mart-Salmon *pg 9*
  - Nampa Auto Parts-Salmon *pg 9*
  - Salmon Qwik Lube-Salmon *pg 9*
  - Orr's Point S Tire & Auto-Salmon *pg 9*
- **DINING**
  - Junkyard Bistro-Salmon *pg 11*
  - Rise & Shine Espresso-Salmon *pg 11*
- **ENTERTAINMENT**
  - Pins & Tips-Salmon *pg 15*
- **HEALTH & BEAUTY**
  - Salmon River Chiropractic-Salmon *pg 18*
  - Total Image Salon-Salmon *pg 18*
- **HOME & OFFICE**
  - The Recorder Herald-Salmon *pg 22*
  - River City Red-E-Mix-Salmon *pg 22*
- **RETAIL SHOPPING**
  - Serpent Skin Camo-Online Shopping *pg 26*
  - Salmon Real Deals-Salmon *pg 26*
- **TRAVEL-HOTELS**
  - Syringa Lodge-Salmon *pg 28*

## EAST IDAHO

- **AGRICULTURE EQUIPMENT & SERVICES**
  - Agri-Service-Blackfoot & Sugar City *pg 4*
- **AUTO SALES & MAINTENANCE**
  - Valley Equipment & Irrigation-Arco *pg 9*
  - Firehose Car Wash-Idaho Falls *pg 9*
  - Preston CarQuest Auto Parts-Preston *pg 9*
  - Ron Keller Tire, Inc-Preston & Malad *pg 10*
- **DINING**
  - Smitty's-Idaho Falls *pg 11*
  - L7 Bar & Grill-Mackay *pg 11*
  - Bru House Galilei-Pocatello *pg 11*
  - Smokin' Buds-Southeast Idaho *pg 11*
  - Jim Dandy Brewing-Pocatello *pg 11*
- **ENTERTAINMENT**
  - Blackfoot Movie Mill-Blackfoot *pg 12*
  - Centre Twin-Idaho Falls *pg 12*
  - Paramount-Idaho Falls *pg 12*
  - Yellowstone Bear World-Rexburg *pg 14*
  - Geronimo's-Pocatello *pg 15*
  - Idaho Potato Museum-Blackfoot *pg 15*
  - Heber Hatchets-Pocatello & Rexburg *pg 15*
  - Sled Shed-Rexburg *pg 15*
- **HEALTH & BEAUTY**
  - Root Cause Integrative Medicine-Ammon *pg 19*
  - Summit Eyecare-Idaho Falls • Pocatello • Rexburg • St. Anthony *pg 19*
  - DermaChic-Rexburg *pg 19*
- **HOME & OFFICE**
  - Snowcap Storage-Rigby *pg 22*
- **RETAIL SHOPPING**
  - **CBI Bikes-Idaho Falls & Pocatello *pg 26***
- **TRAVEL-HOTELS**
  - The Victor-Victor *pg 28*
  - Cub River Guest Ranch-Preston *pg 28*

## NORTH IDAHO

- **AUTO SALES & MAINTENANCE**
  - Glanzen Auto Detail-Post Falls & surrounding areas *pg 10*
  - St. Maries Saw & Cycle-St. Maries *pg 10*
  - Silverlake Automotive-Coeur d'Alene • Post Falls *pg 10*
- **ENTERTAINMENT**
  - Silver Mountain Resort-Kellogg *pg 14*
- **HEALTH & BEAUTY**
  - Peak Health & Wellness-Coeur d'Alene • Hayden • Post Falls *pg 19*
  - Pinnacle Physical Therapy-Post Falls *pg 19*
- **HOME & OFFICE**
  - HB Storage-Fernwood *pg 22*
- **RETAIL SHOPPING**
  - Matt Leitholt Photography + Film-Spokane • Post Falls & Surrounding Area *pg 26*
- **TRAVEL-HOTELS**
  - Scenic 6 RV Park-Potlatch *pg 28*

## SOUTH CENTRAL IDAHO

- **AGRICULTURE EQUIPMENT & SERVICES**
  - No Fly Zone-South Central *pg 6*
- **DINING**
  - Morey's Steak House-Burley *pg 11*
- **ENTERTAINMENT**
  - Century Cinema 5-Burley *pg 12*
  - Bearded Axe-Twin Falls *pg 15*
  - Gemstone Climbing-Twin Falls *pg 15*
- **HOME & OFFICE**
  - ETS Telco-Cassia • Minidoka • Lincoln Counties *pg 22*
- **TRAVEL-HOTELS**
  - Best Western Plus/Perkins Restaurant & Bakery-Burley *pg 28*

## SOUTHWEST IDAHO

- **AUTO SALES & MAINTENANCE**
  - Mile High Power Sports *pg 10*
- **ENTERTAINMENT**
  - Wahooz/Pinz-Meridian *pg 13*
  - Roaring Springs-Meridian *pg 13*
  - Bigfoot Firearms Training-Southwest *pg 16*
  - Desert Canyon Golf Course-Mountain Home *pg 16*
  - Simshot-Meridian *pg 16*
- **HOME & OFFICE**
  - Trust Self Storage-Boise • Meridian *pg 22*

\*All programs and benefits are subject to change without notification.

# DON'T LEAVE MONEY

## ON THE TABLE

 **Idaho Farm Bureau.**  
Member Benefits

### MEMBERS RECEIVE

- ✓ Access to over a million products
- ✓ Deeper discounts on frequently purchased products
- ✓ Real-time product availability and order tracking

**Farm Bureau<sup>®</sup>  
& GRAINGER<sup>®</sup>**

**DON'T MISS OUT ON  
GREAT SAVINGS!**

**GRAINGER<sup>®</sup>**

FOR THE ONES WHO GET IT DONE

Grainger is America's trusted source for MRO supplies and industrial products. For over 90 years, they have built a tradition of getting customers the products and services they need. Grainger offers over a million products from thousands of trusted MRO suppliers, plus online features and a mobile app that let customers order their MRO equipment and manage their orders whenever and wherever they are. They back this up with 24/7 customer service and technical support from experts with deep knowledge of MRO tools and products.

### Contact

Betty Inskeep  
Director of Member Benefits  
Idaho Farm Bureau

☎ 208-239-4279

✉ [blinskeep@idahofb.org](mailto:blinskeep@idahofb.org)